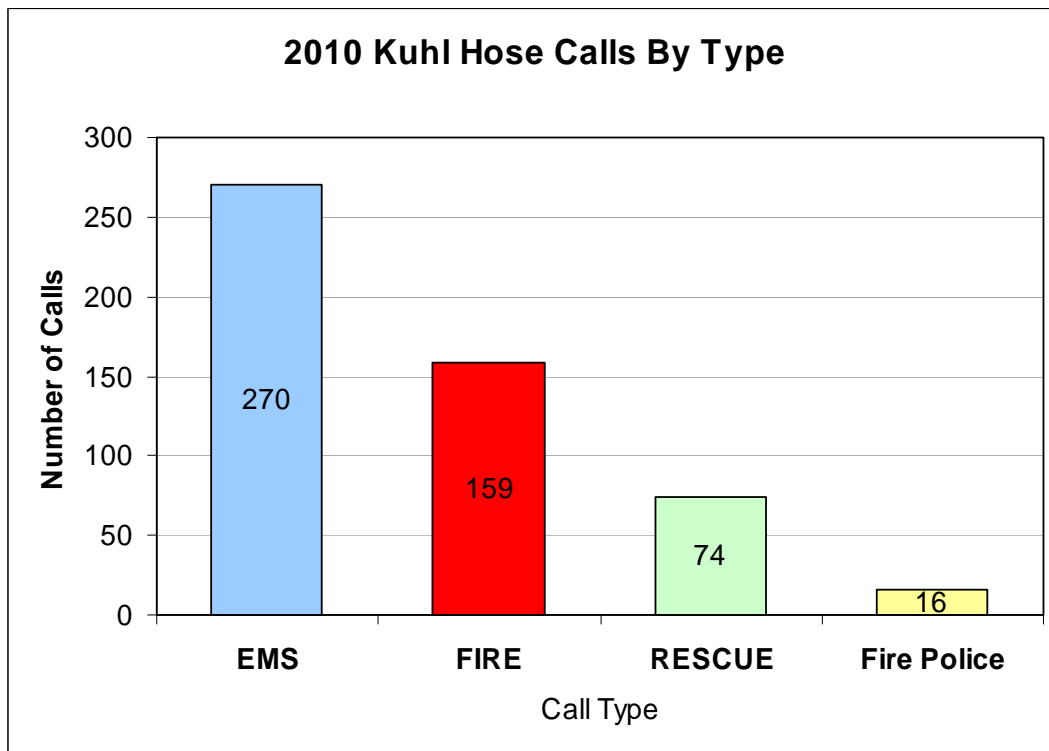




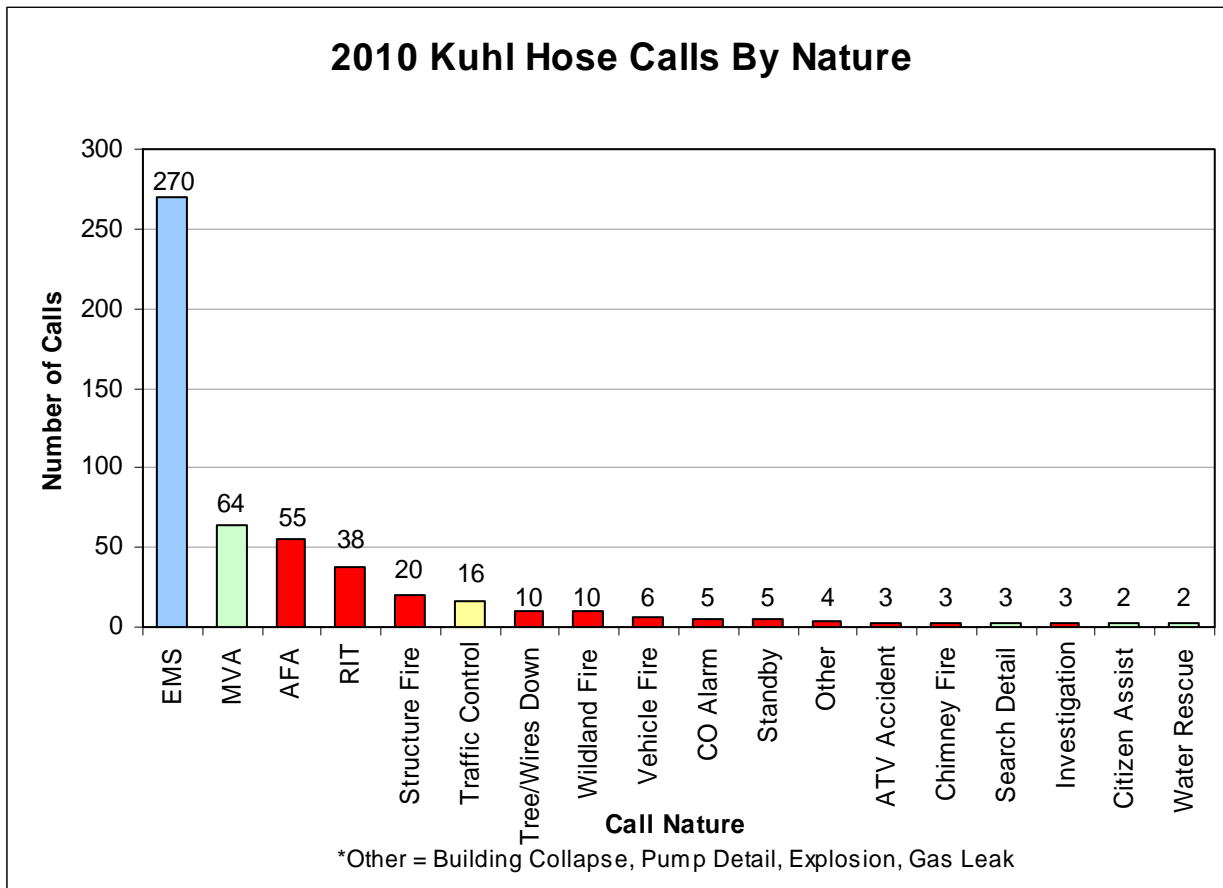
## Kuhl Hose 2010 Emergency Responses Report



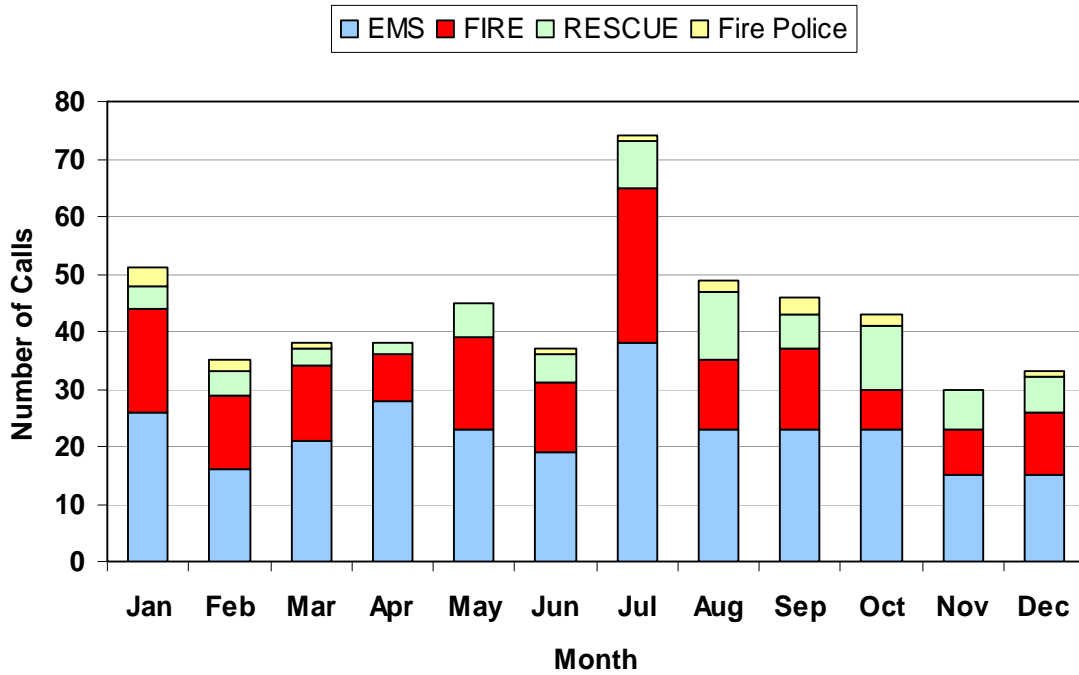
**Total Calls - 519**

# Monthly Call Summary

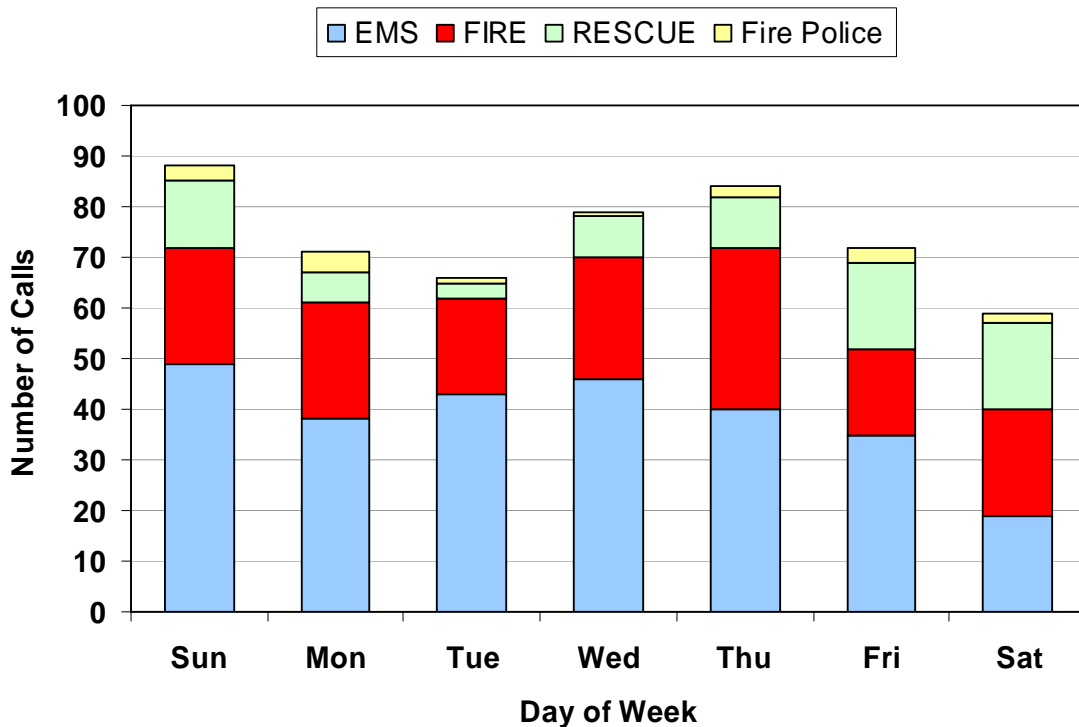
| Category        | Jan | Feb | Mar | Apr | May | Jun | Jul | Aug | Sep | Oct | Nov | Dec | Grand Total |
|-----------------|-----|-----|-----|-----|-----|-----|-----|-----|-----|-----|-----|-----|-------------|
| EMS             | 26  | 16  | 21  | 28  | 23  | 19  | 38  | 23  | 23  | 23  | 15  | 15  | 270         |
| MVA             | 4   | 3   | 3   | 2   | 5   | 4   | 6   | 9   | 6   | 11  | 6   | 5   | 64          |
| AFA             | 5   | 6   | 1   | 2   | 7   | 5   | 10  | 6   | 5   | 3   | 2   | 3   | 55          |
| RIT             | 5   | 2   | 4   |     | 1   | 4   | 5   | 4   | 4   | 2   | 5   | 2   | 38          |
| Structure Fire  | 2   |     | 3   | 1   |     | 1   | 8   |     |     | 1   |     | 4   | 20          |
| Traffic Control | 3   | 2   | 1   |     |     | 1   | 1   | 2   | 3   | 2   |     | 1   | 16          |
| Tree/Wires Down | 2   |     |     |     | 4   | 1   |     | 1   | 1   |     |     | 1   | 10          |
| Wildland Fire   |     |     | 2   | 4   | 2   |     | 2   |     |     |     |     |     | 10          |
| Vehicle Fire    | 1   | 1   | 1   |     |     |     |     |     | 1   | 1   | 1   |     | 6           |
| CO Alarm        | 2   |     |     | 1   |     | 1   |     | 1   |     |     |     |     | 5           |
| Standby         | 1   |     | 1   |     | 1   |     |     |     | 2   |     |     |     | 5           |
| Other           |     | 1   |     |     | 1   |     | 1   |     | 1   |     |     |     | 4           |
| ATV Accident    |     |     |     |     |     | 1   |     | 2   |     |     |     |     | 3           |
| Chimney Fire    |     | 2   | 1   |     |     |     |     |     |     |     |     |     | 3           |
| Search Detail   |     |     |     |     |     |     | 2   | 1   |     |     |     |     | 3           |
| Investigation   |     | 1   |     |     |     |     | 1   |     |     |     |     | 1   | 3           |
| Citizen Assist  |     | 1   |     |     |     |     |     |     |     |     | 1   |     | 2           |
| Water Rescue    |     |     |     |     | 1   |     |     |     |     |     |     | 1   | 2           |
| Grand Total     | 51  | 35  | 38  | 38  | 45  | 37  | 74  | 49  | 46  | 43  | 30  | 33  | 519         |



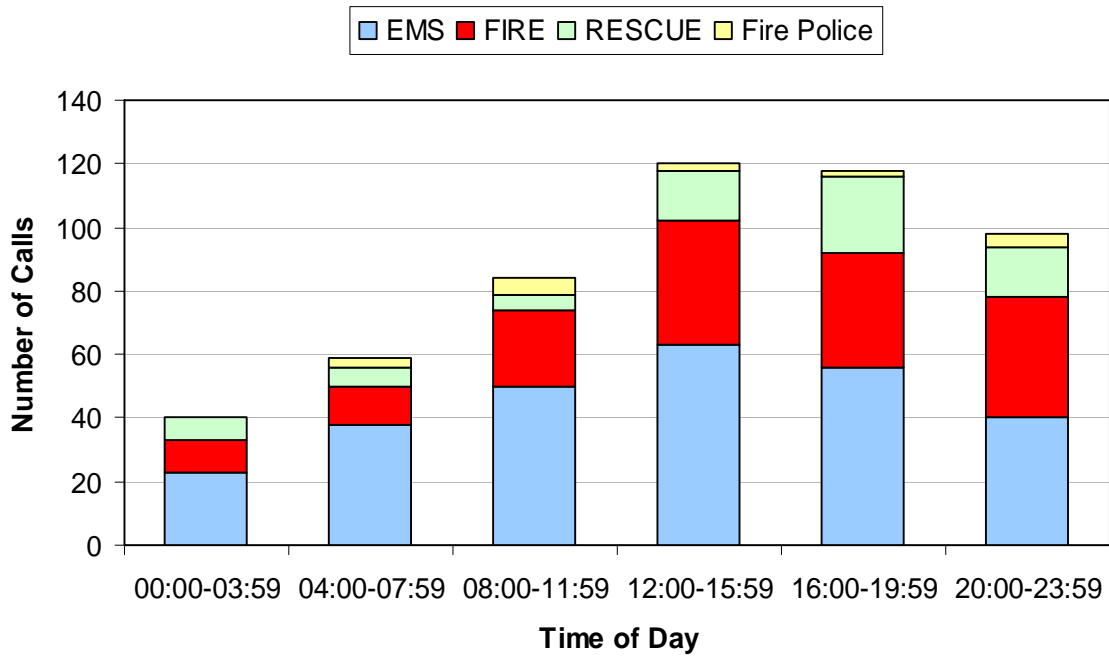
### 2010 Kuhl Hose Calls By Month



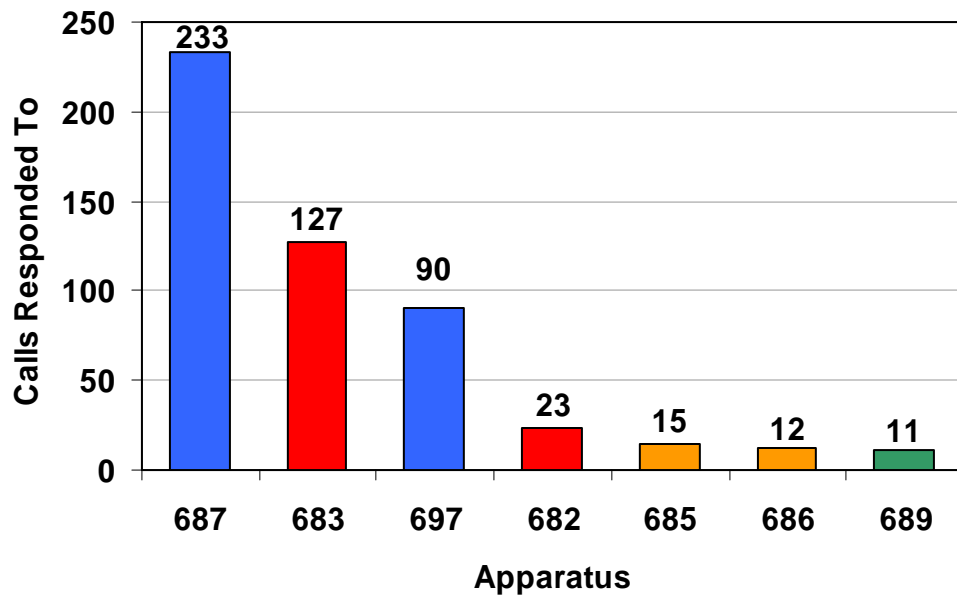
### 2010 Kuhl Hose Calls By Day



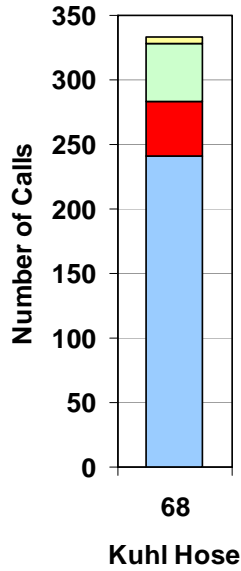
### 2010 Kuhl Hose Calls By Time of Day



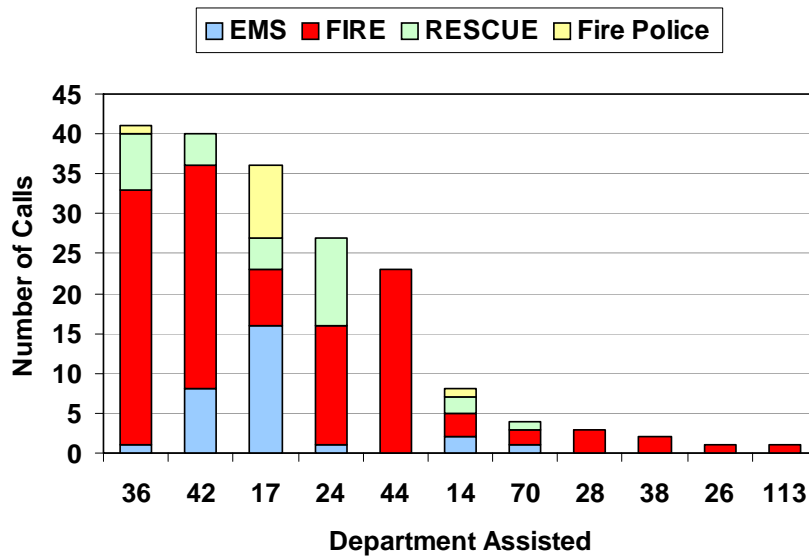
### 2010 Kuhl Hose Apparatus Responses



### 2010 KHC Calls

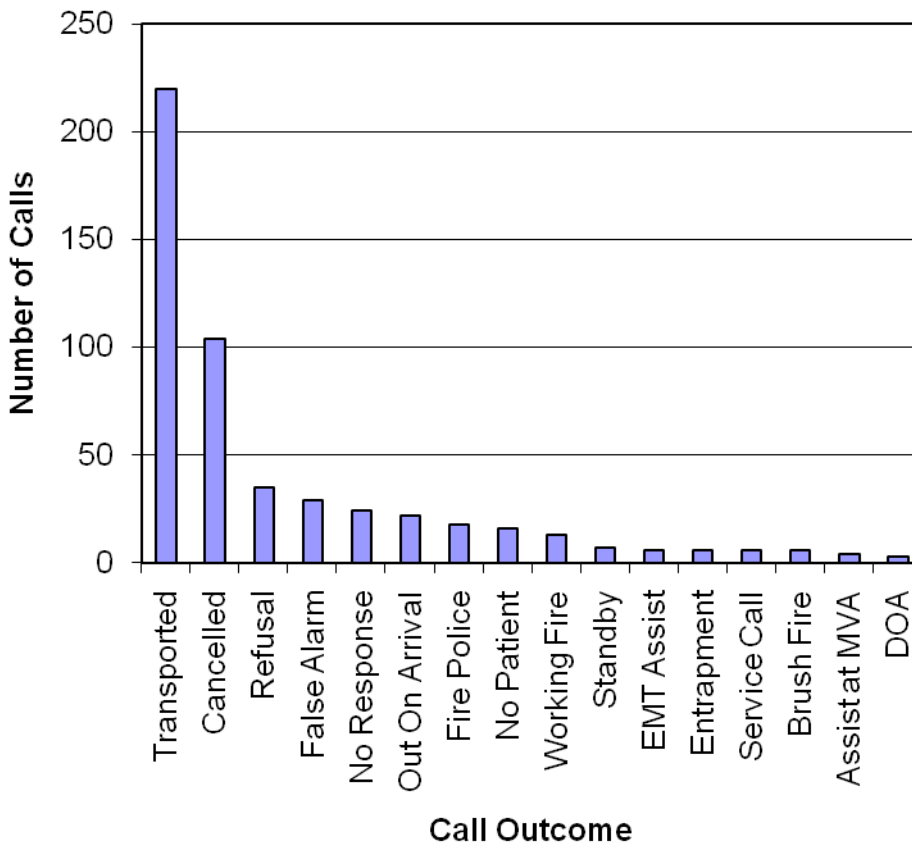


### 2010 Kuhl Hose Mutual Aid Calls By Department

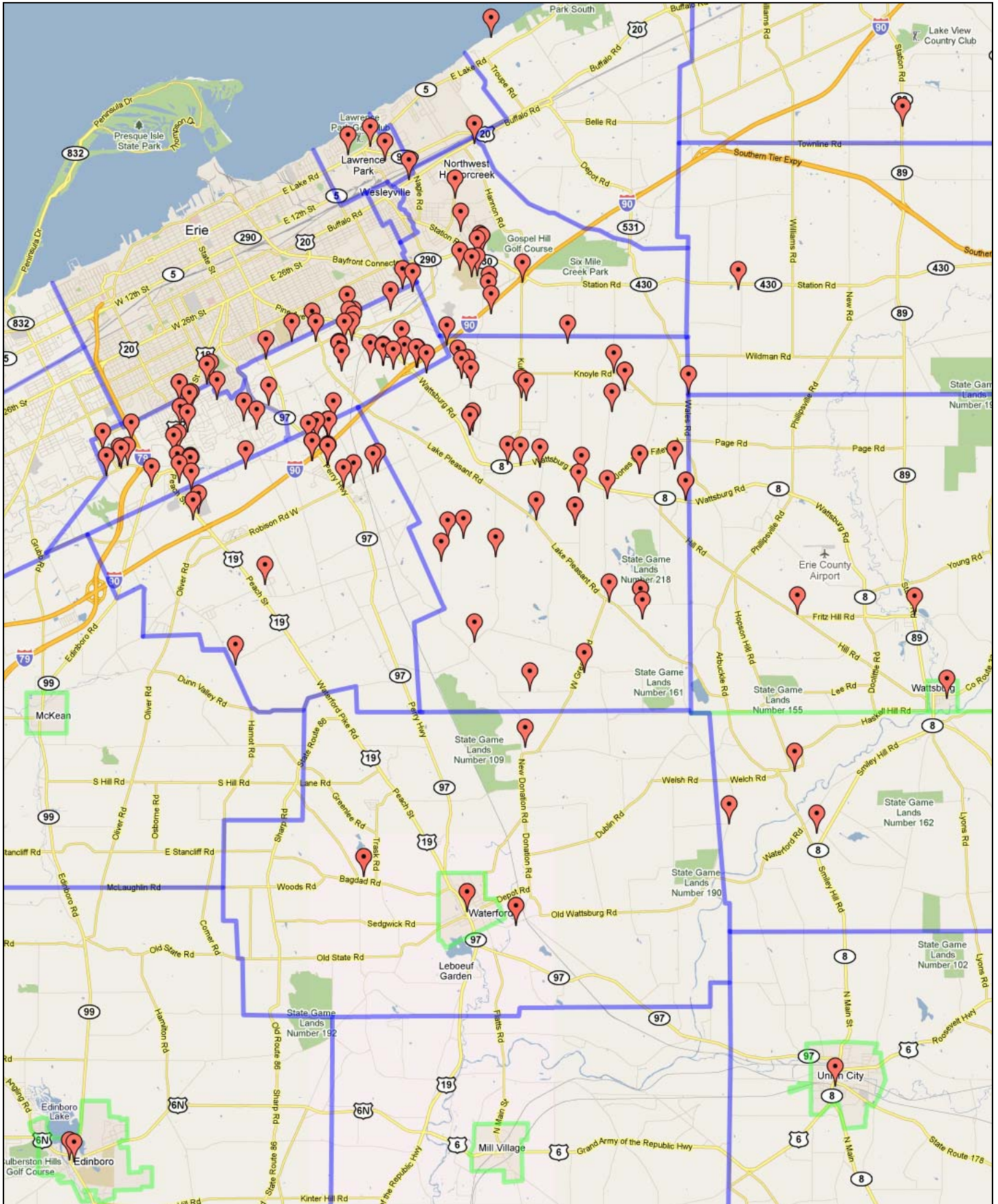


- Department Numbers**
- 68 - Kuhl Hose
  - 36 - Belle Valley
  - 42 - Perry Hiway
  - 17 - Wattsburg
  - 24 - Brookside
  - 44 - Kearsarge
  - 14 - Waterford
  - 70 - Greenfield
  - 28 - Lawrence Park
  - 38 - Edinboro
  - 26 - Fairfield
  - 113 - Union City

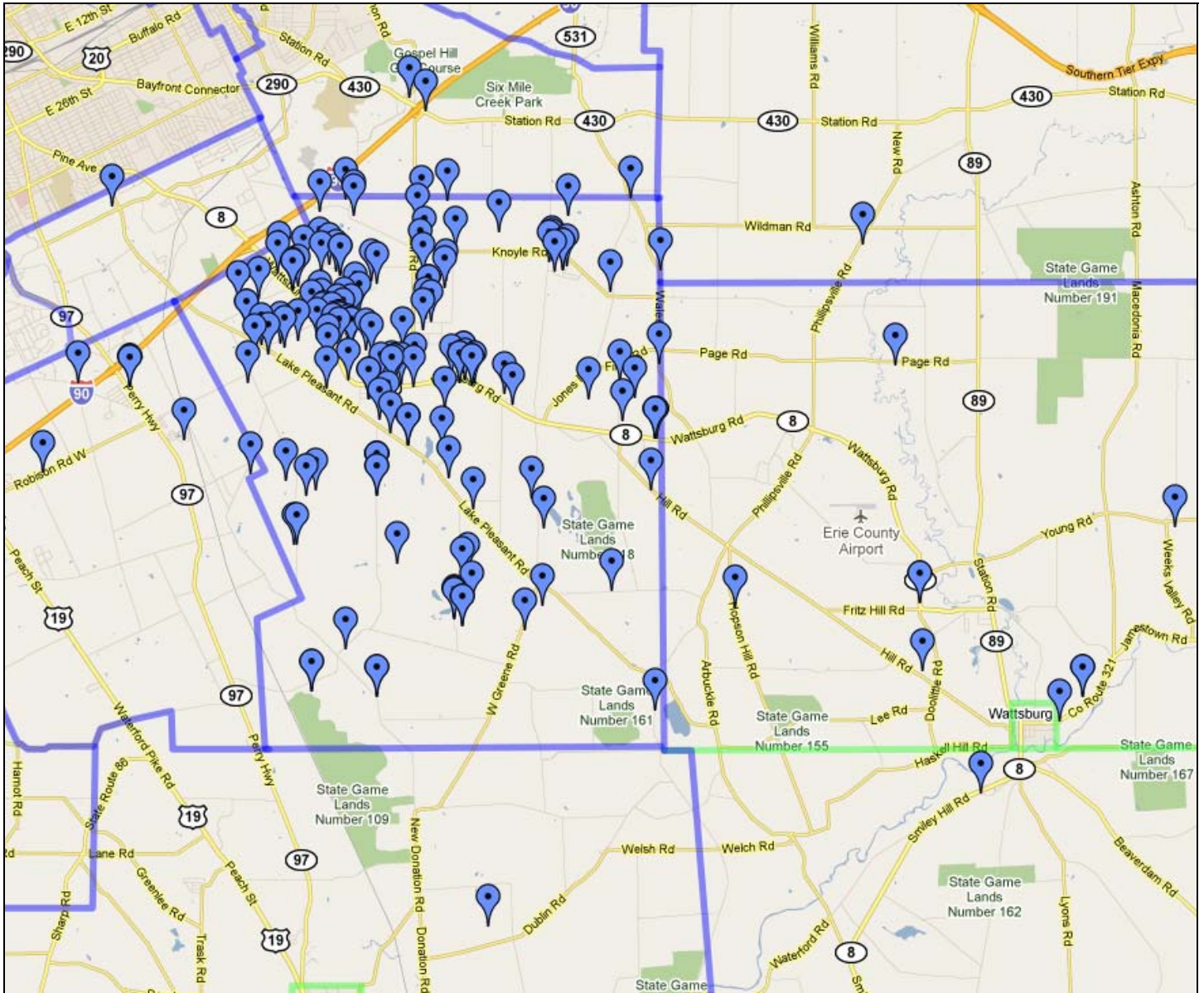
### 2010 Kuhl Hose Call Outcomes



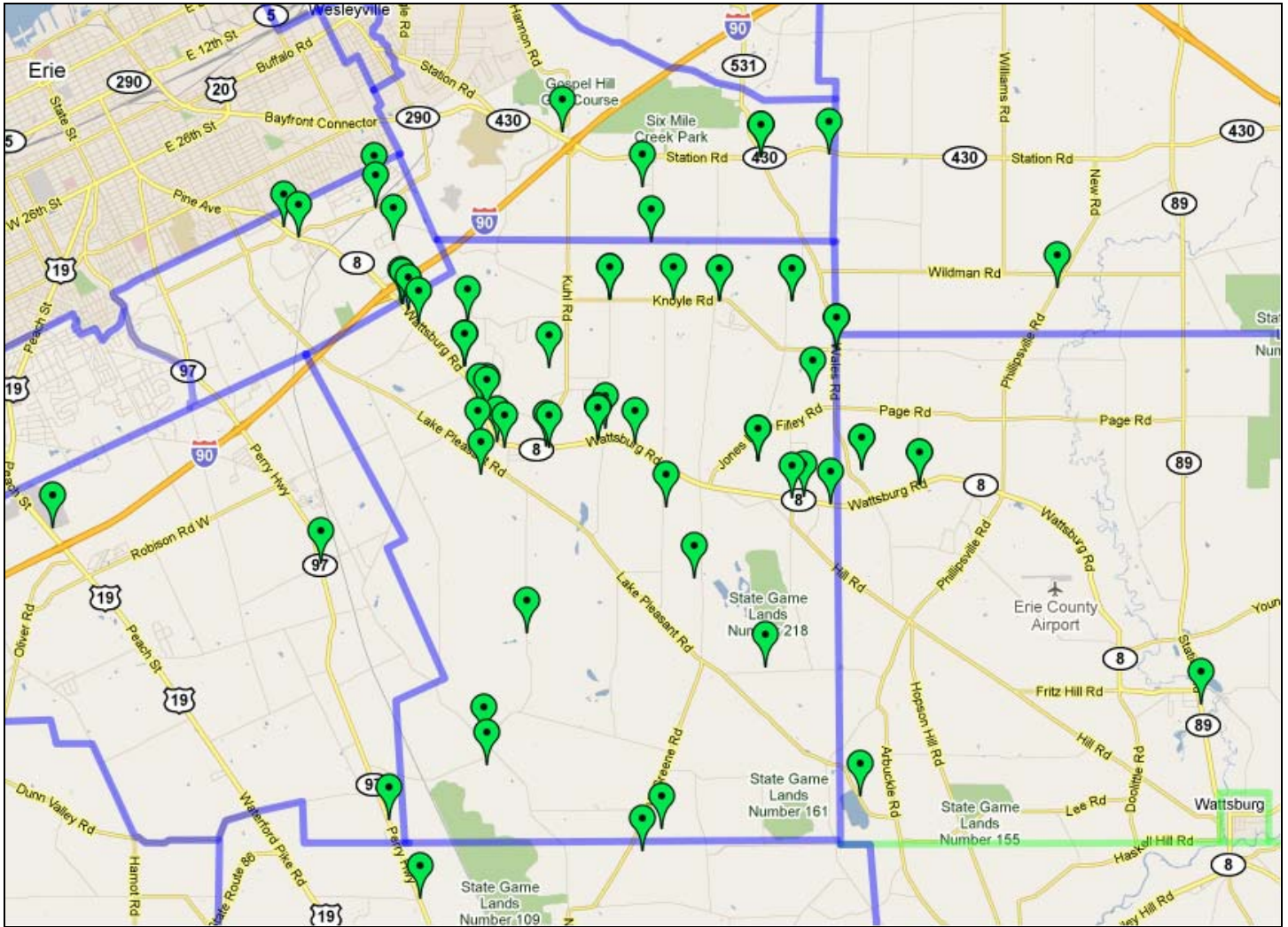
# 2010 Fire Response Map



# 2010 EMS Response Map



# 2010 Rescue Response Map





# 2010 Fire Police Response Map

