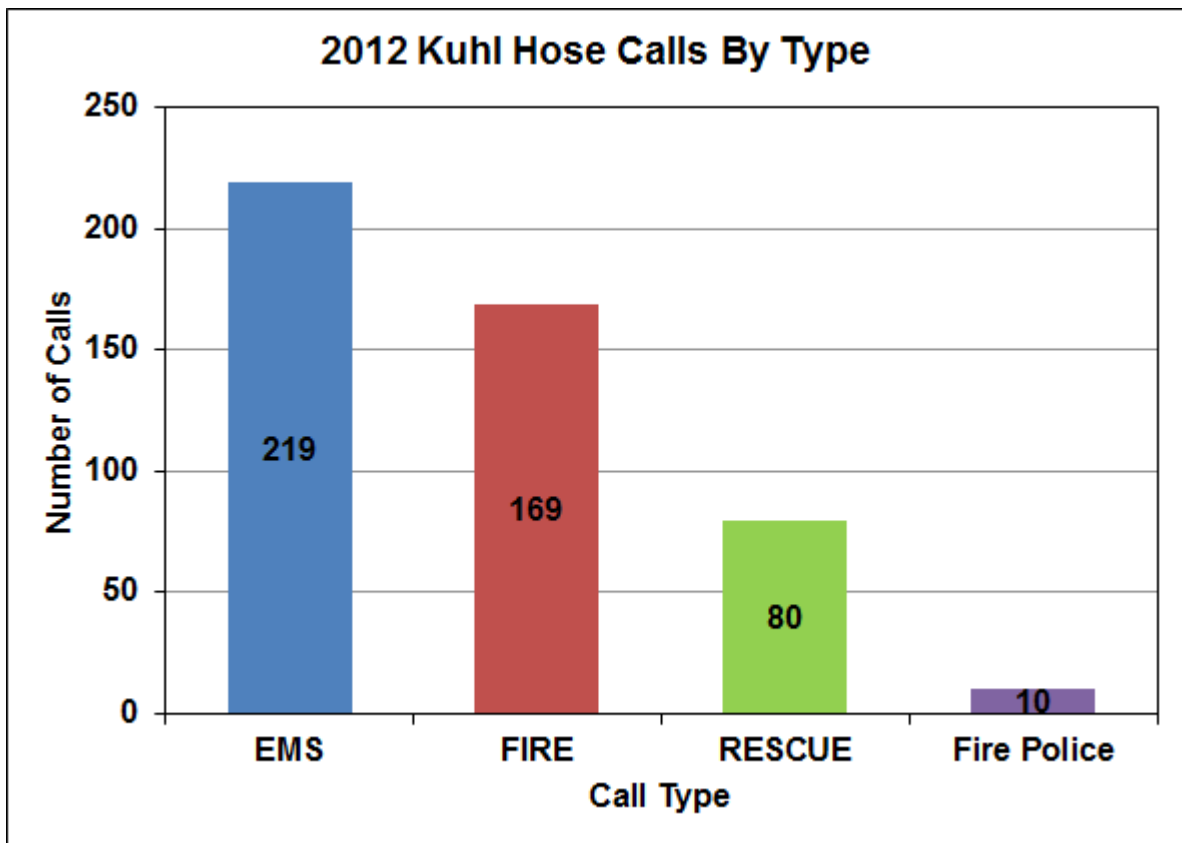


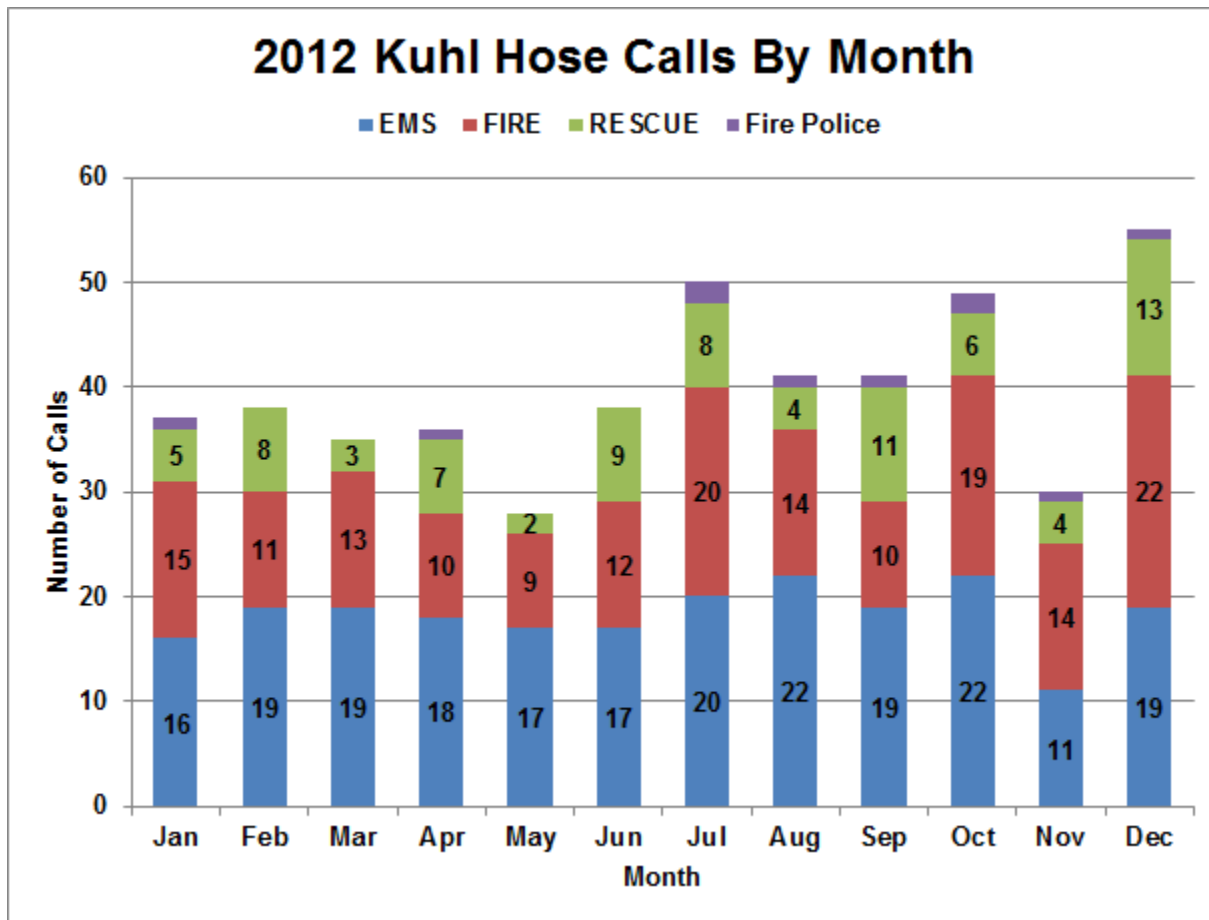


## Kuhl Hose 2012 Emergency Responses Report



**Total Calls - 478**

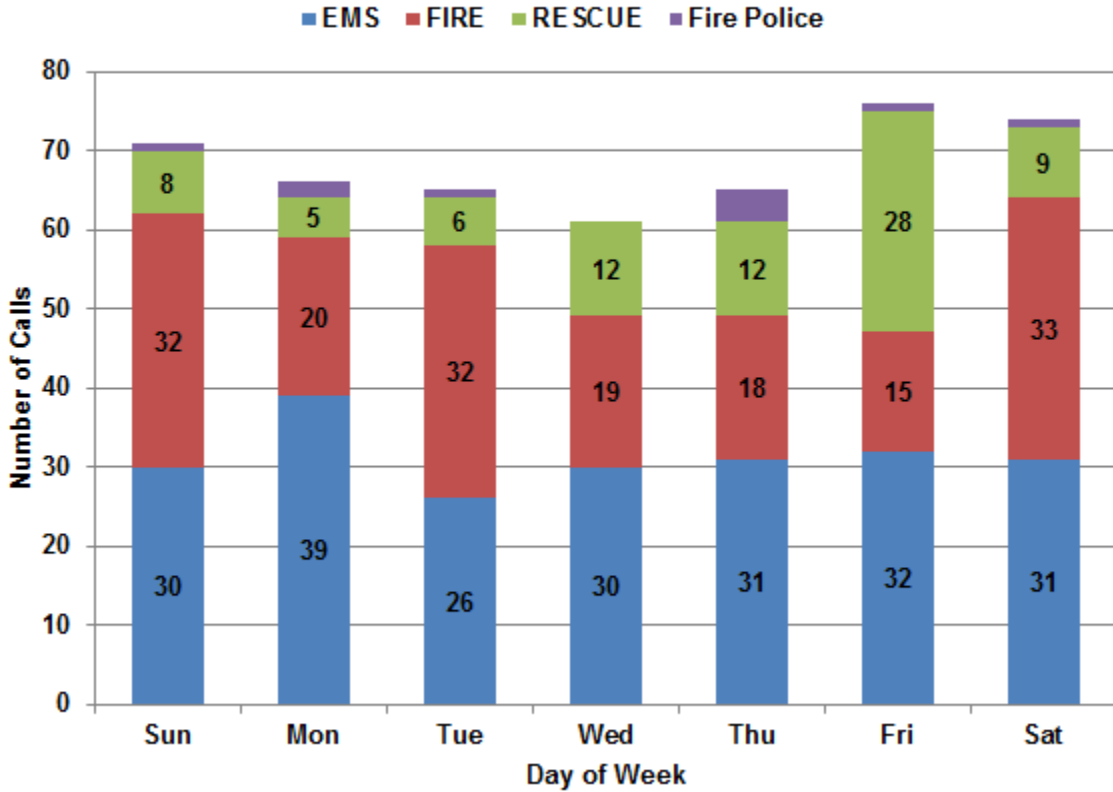
# Monthly Call Summary



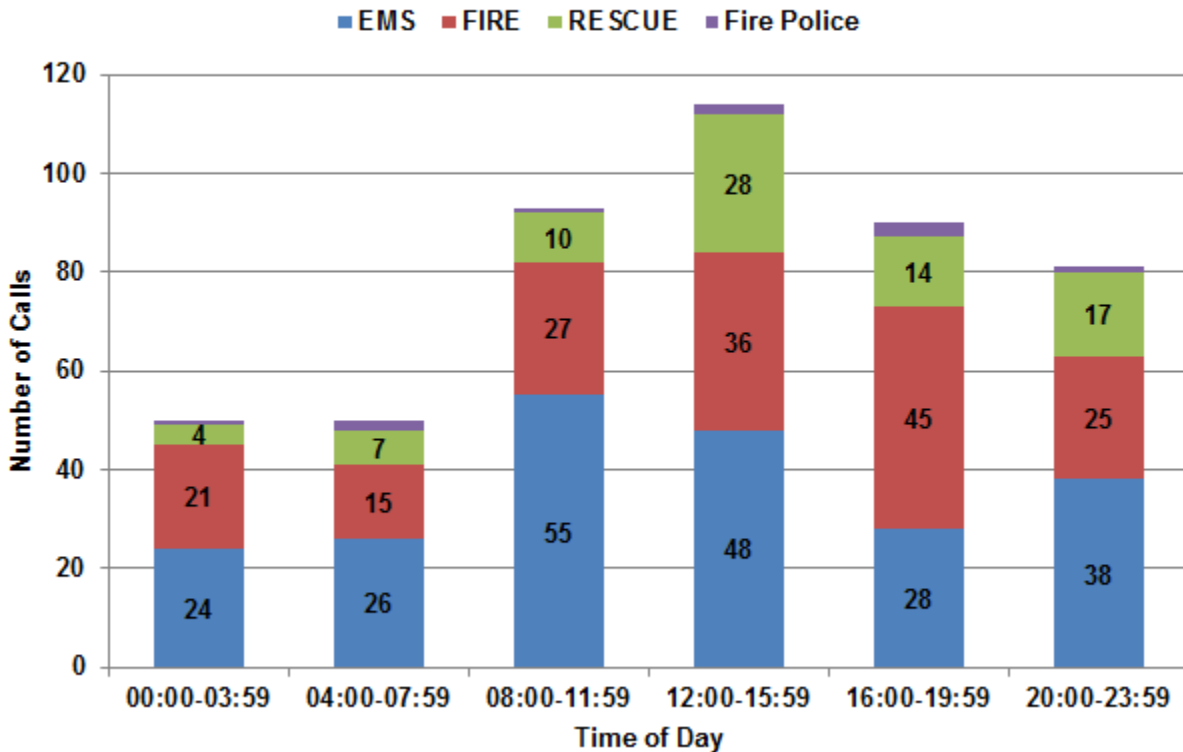
Type	Jan	Feb	Mar	Apr	May	Jun	Jul	Aug	Sep	Oct	Nov	Dec	Grand Total
EMS	16	19	19	18	17	17	20	22	19	22	11	19	219
MVA	5	8	2	5	2	8	8	3	11	5	4	13	74
Structure Fire	7	5	7	3	4	5	7	6	4	3	4	8	63
AFA	4	4	2	2	3	1	4	3	4	6	7	8	48
Wildland Fire			2	2	1		3	2	1	1	2	1	15
Traffic Control	1						2	1	1	3	1	1	10
Stand By	1	1	1			1	2	2		1			9
Tree Down	3			1	1	1					1	1	8
Wires Down				3				1	1	3			8
Investigation				1		2	3			1			7
CO Alarm		1				1				1		2	5
Citizen Assist						1	1			2			4
Vehicle Fire			1			1						1	3
Chimney Fire										1		1	2
Water Rescue			1	1									2
Search Detail								1					1
<b>Grand Total</b>	<b>37</b>	<b>38</b>	<b>35</b>	<b>36</b>	<b>28</b>	<b>38</b>	<b>50</b>	<b>41</b>	<b>41</b>	<b>49</b>	<b>30</b>	<b>55</b>	<b>478</b>

\*Includes RIT Responses

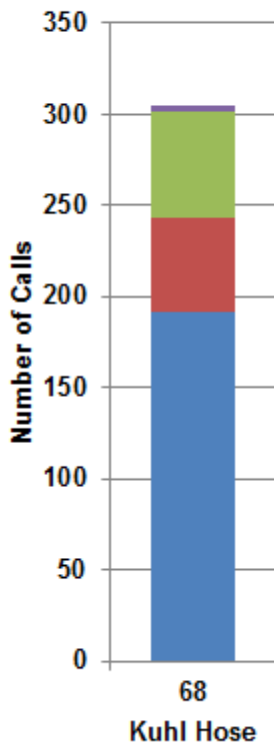
## 2012 Kuhl Hose Calls By Day



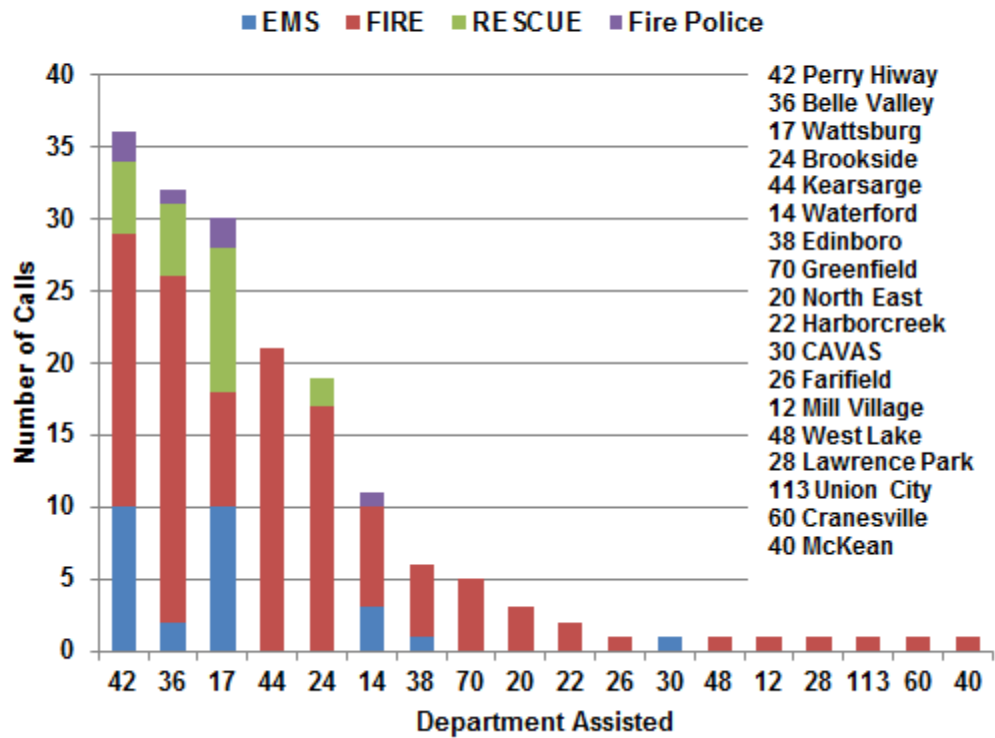
## 2012 Kuhl Hose Calls By Time of Day



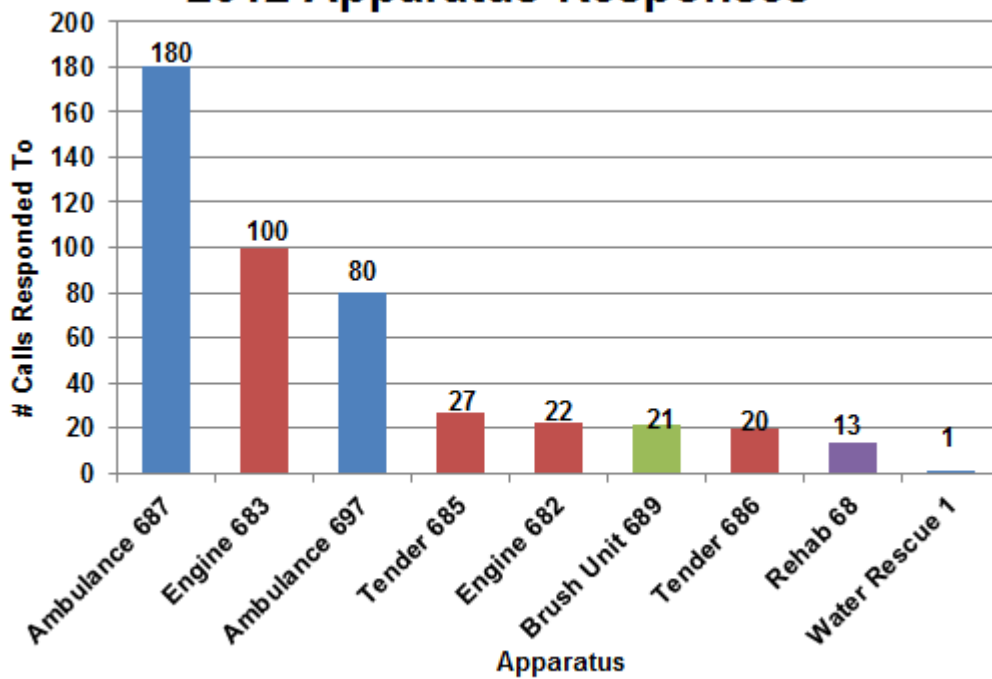
## 2012 KHC Calls



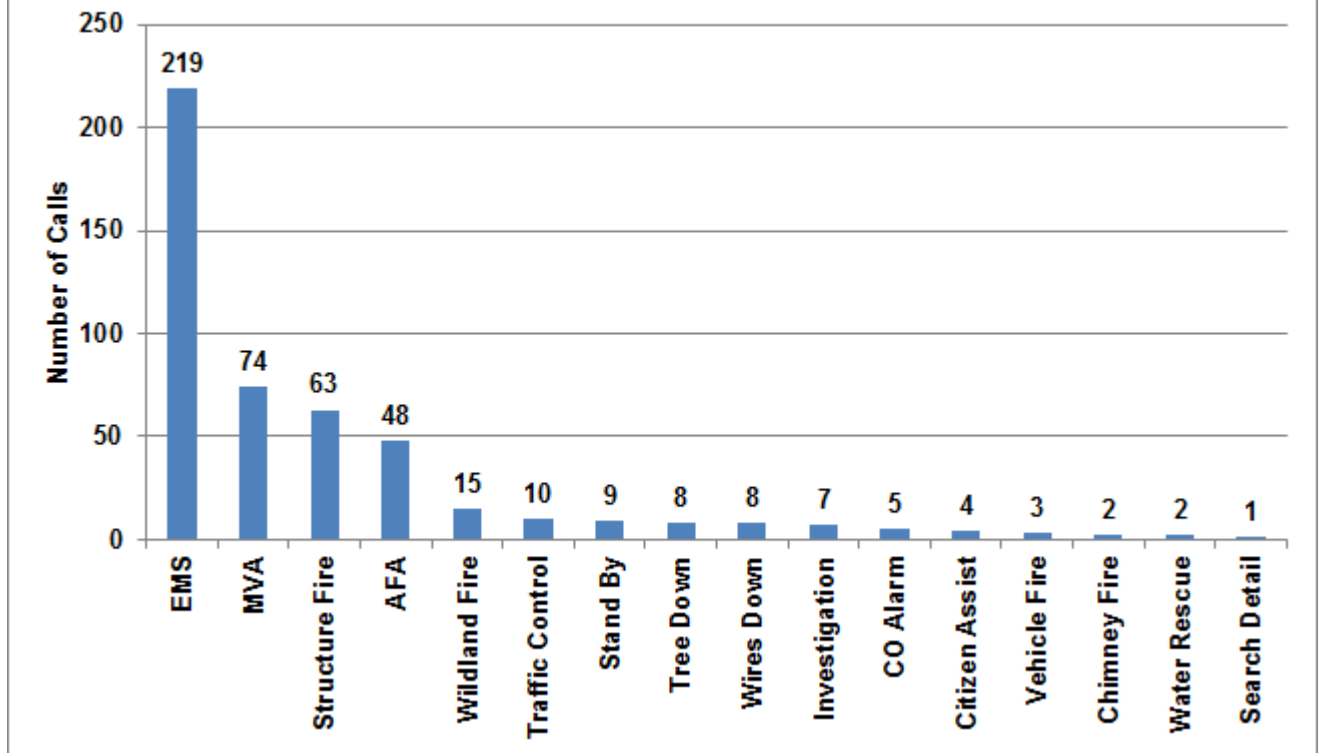
## 2012 Kuhl Hose Mutual Aid Calls By Department



## 2012 Apparatus Responses

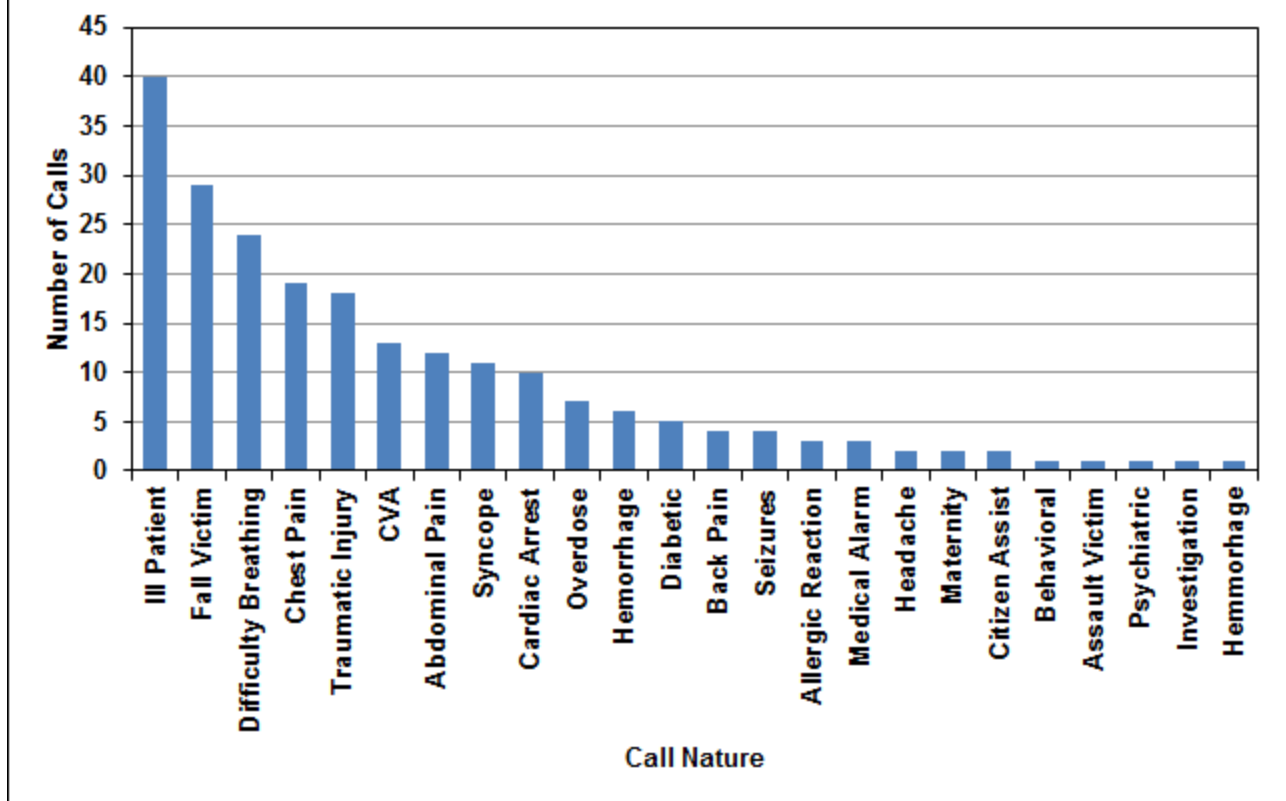


## 2012 Kuhl Hose Calls By Nature

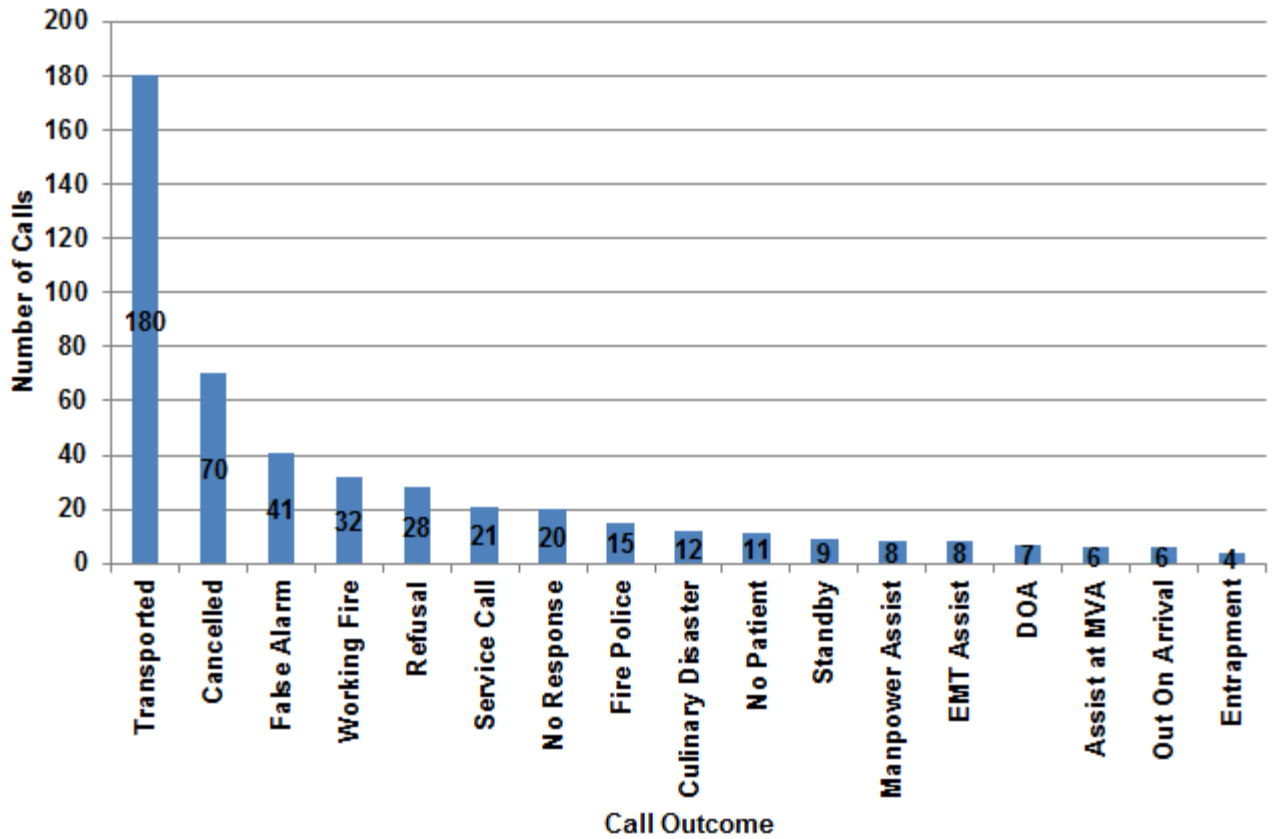


Structure Fires Include RIT Responses

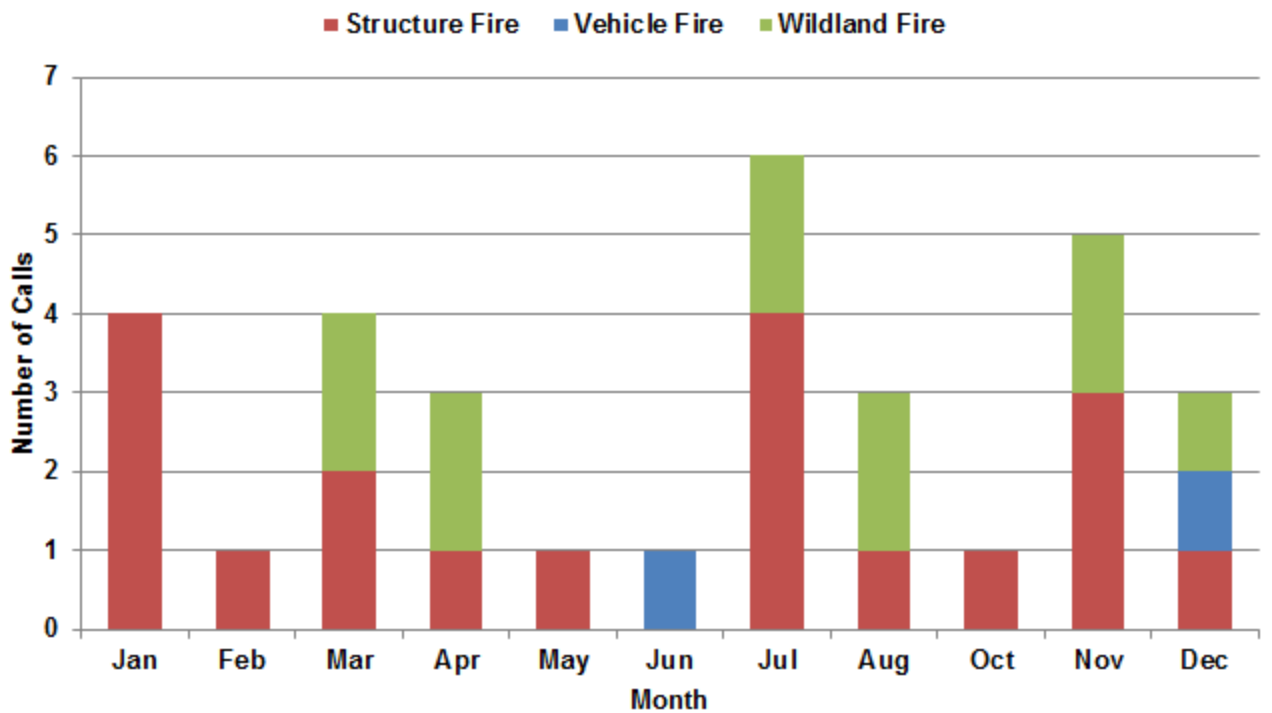
## 2012 Kuhl Hose EMS Calls By Nature



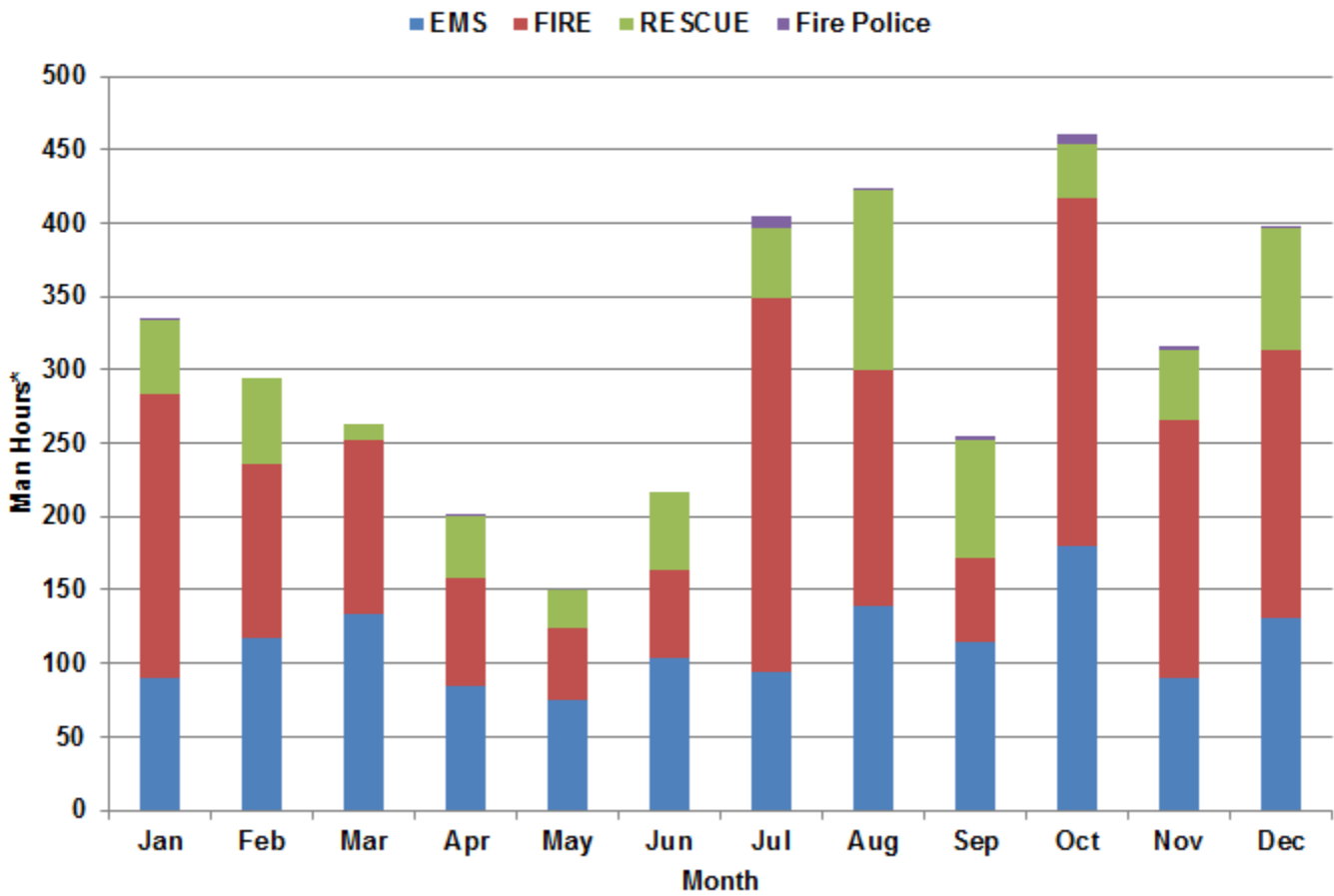
## 2012 Kuhl Hose Call Outcomes



## 2012 Kuhl Hose Working Fires



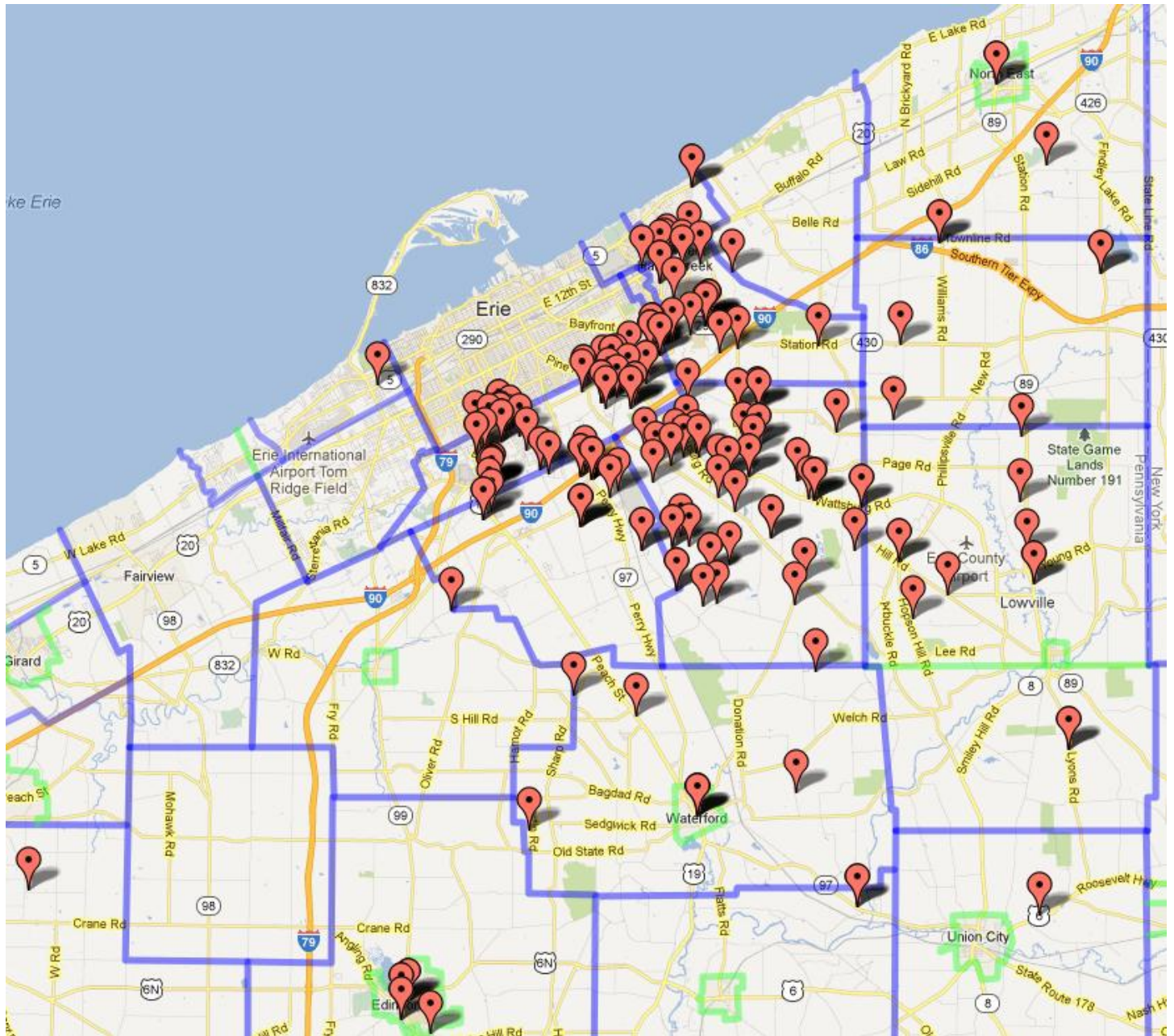
## 2012 "Man Hours"



\*defined as: [total members responding to call] x [total duration of call]

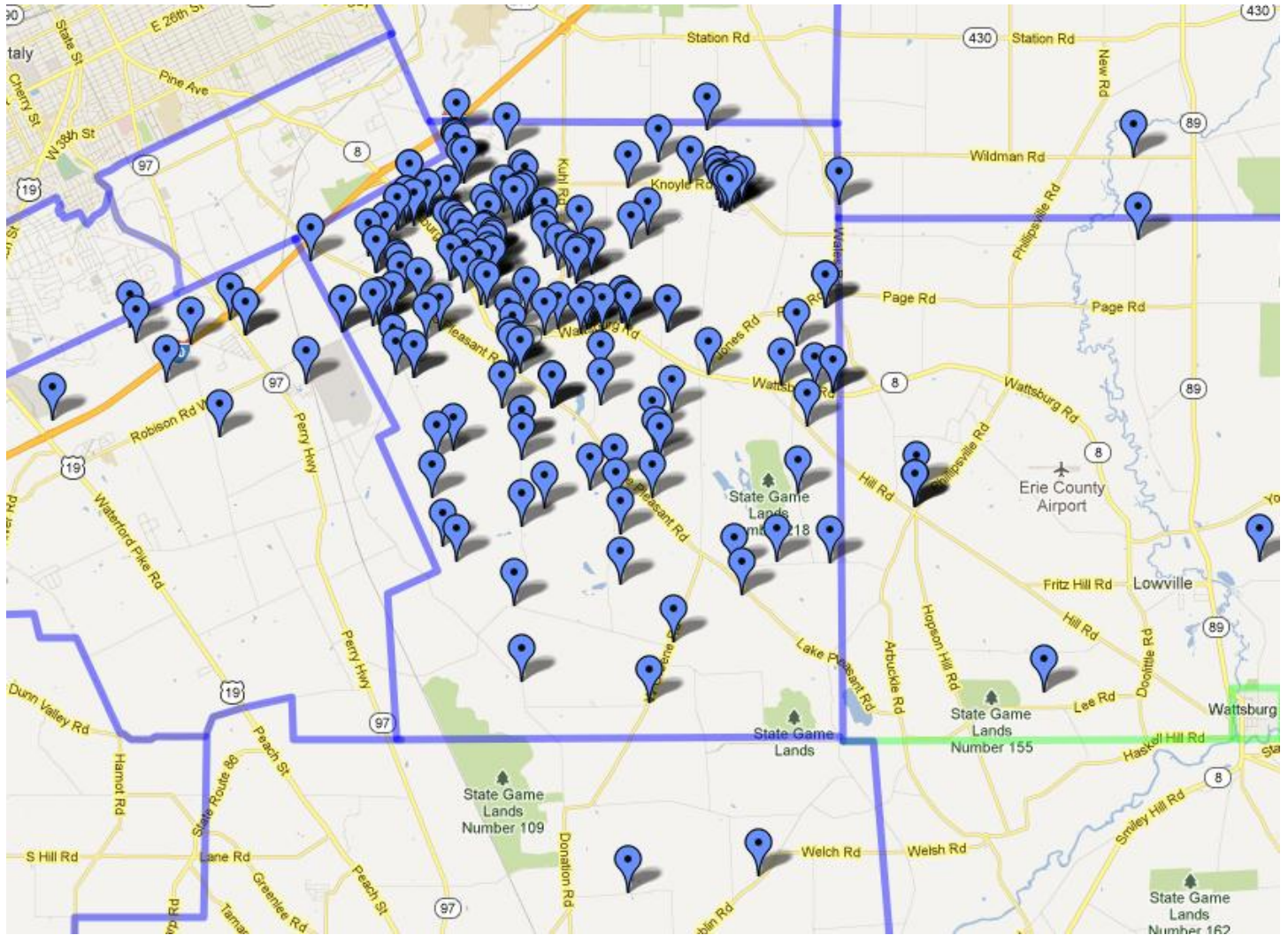
Month	EMS	FIRE	RESCUE	Fire Police	Grand Total
Jan	90	194	50	1	334
Feb	118	118	59		295
Mar	134	118	10		262
Apr	85	73	43	1	202
May	75	48	26		150
Jun	104	59	54		217
Jul	93	255	48	8	404
Aug	139	160	122	1	423
Sep	114	58	81	3	255
Oct	180	237	36	8	461
Nov	89	177	47	3	316
Dec	131	182	84	1	397
Grand Total	1353	1679	660	25	3717

# 2012 Fire Response Map

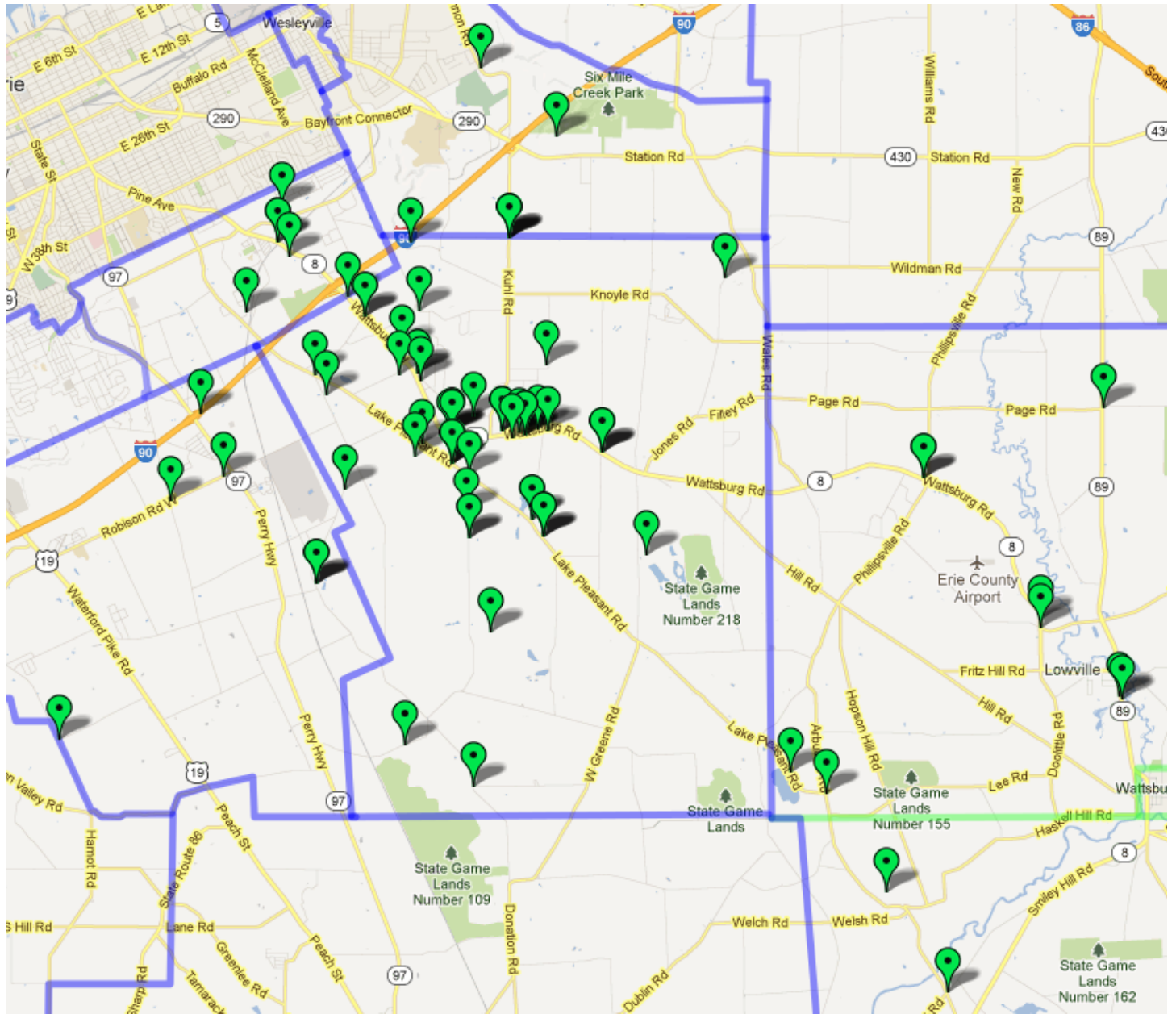




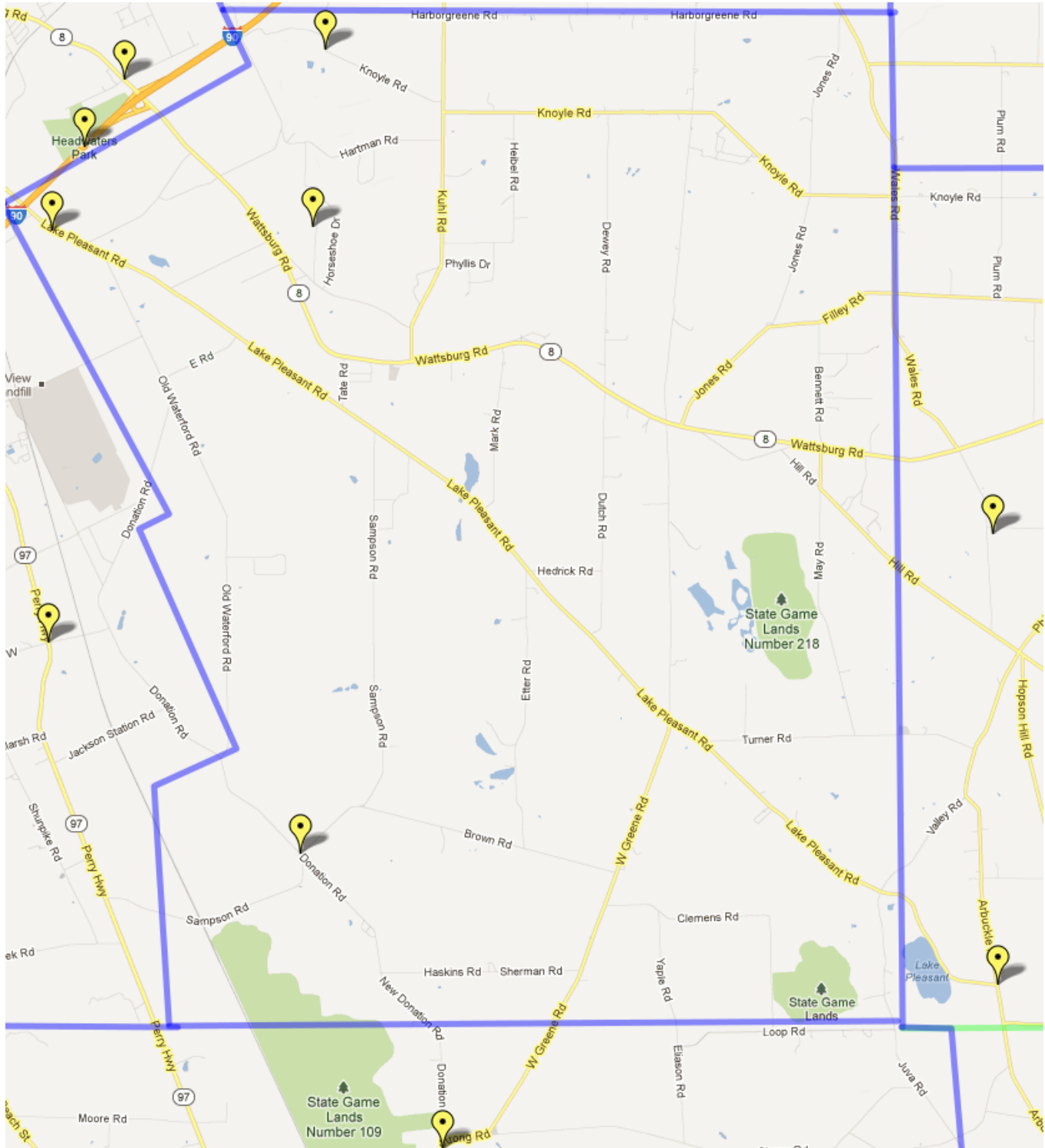
# 2012 EMS Response Map



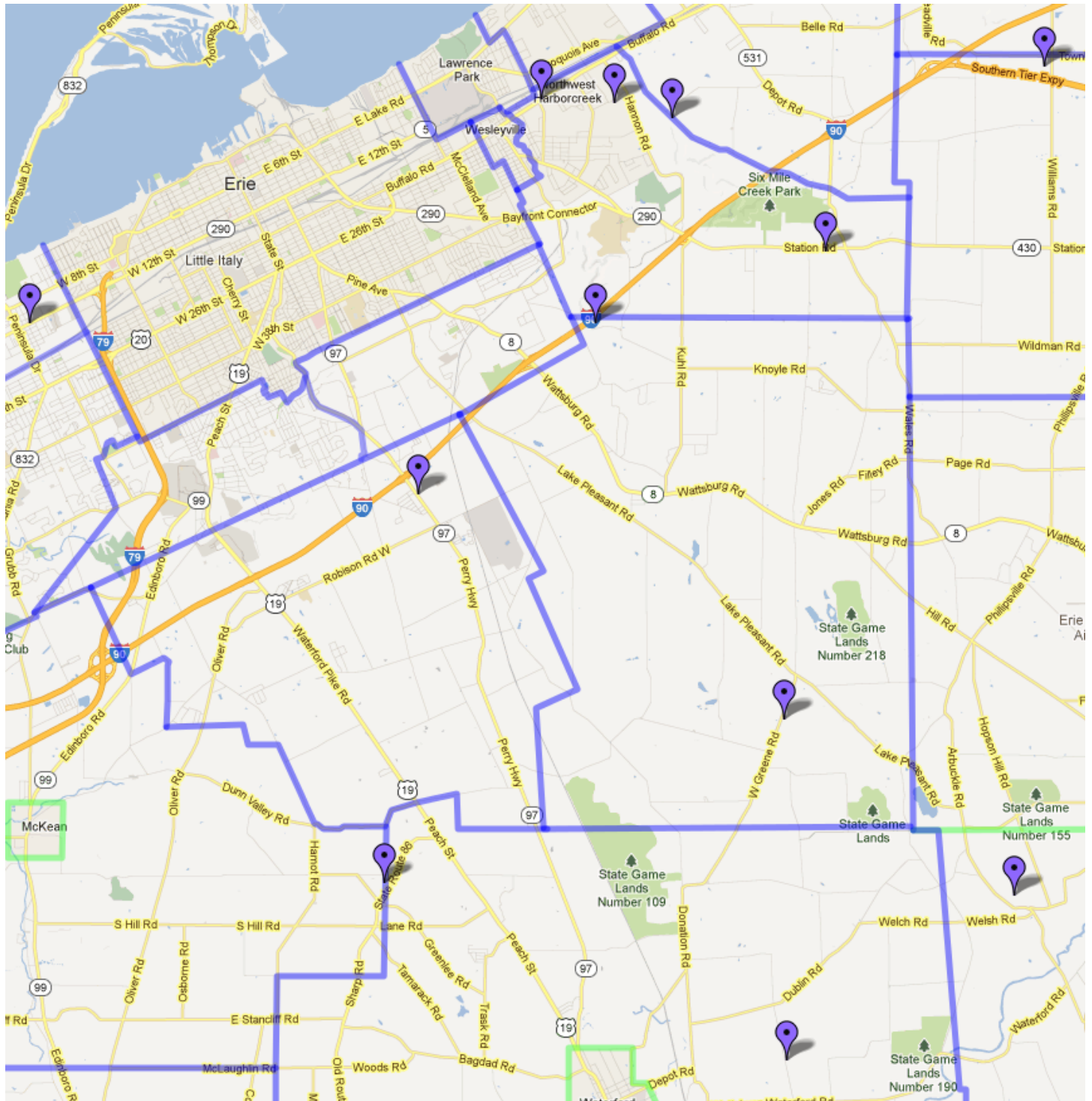
# 2012 Rescue Response Map



# 2012 Fire Police Response Map



# 2012 Rehab 68 Team Response Map



# 2012 Responses Highlights

**January 4 – MVA w/ Entrapment,  
Lake Pleasant Rd**



**January 7 – Laundromat Fire, Edinboro  
(Stand-by for Station 38)**



**January 21 – Structure Fire Assist Dept. 17, Phillipsville Rd.**



**January 24 – Structure Fire Assist Dept. 17,  
Lyons Rd.**



**February 26 – Structure Fire Assist Dept. 42,  
Donation Rd.**



**March 11 - Wildland Fire, Bliley Rd**



**March 15 - RIT Assist Dept. 38, Green Oaks Dr.**



**March 28 - Structure Fire Assist Dept. 40, Flower Rd.**



**April 6 - Barn Fire Assist Dept. 14, Scott Rd.**



**April 13 - Junkyard Fire, Auto Express, Route 8**



**April 20 - Wildland Fire, Assist Dept. 24, Shannon Rd.**



**June 2 – MVA w/ Entrapment, Assist Dept. 17, Route 89 & Page Rd.**



**June 5 – Vehicle Fire Assist Dept. 14, Loop Rd.**



**July 10 – Wildland Fire Assist Dept. 20, Cole Rd.**



**July 15 – Barn Fire Assist Dept. 70, Williams Rd**



**July 24 – Barn Fire Assist Dept. 42,  
Presque Isle Downs**



**August 25 – RIT/Rehab Assist Dept. 24,  
Buffalo Rd**



**August 26- Search Detail/Technical Rescue, Kane Hill Rd**

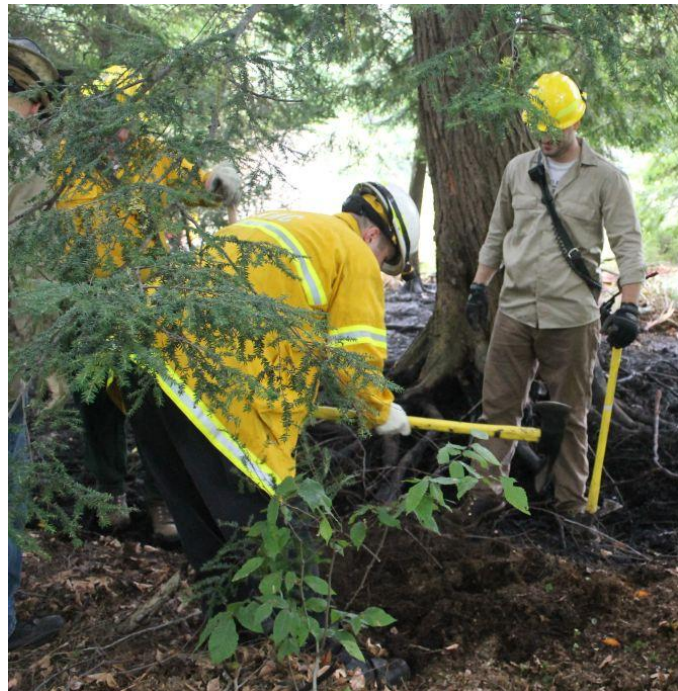


**August 26- Wildland Fire Assist Dept. 70, Station Rd.**





**August 27 – Wildland Fire Assist Dept. 113, Route 6 @ Union City Reservoir**



**August 30 – MVA w/ Entrapment Assist Dept. 36, Interstate 90 Exit 29**



**September 21 –MVA w/ Entrapment Assist Dept. 36, Route 8 @ Shrimper Rd.**



**September 28 – Rollover MVA,  
Lake Pleasant Rd. @ Tate Rd.**



**October 21 – Chimney Fire,  
Old Waterford Rd.**



**November 9 – Structure Fire Assist Dept. 22**



**November 14 – Structure Fire Assist Dept. 40, Helen Lane**



**November 18 – Structure Fire Assist Dept. 60, Miller Rd.**



**November 25 – MVA w/ Confinement, Old Wattsburg Rd.**



**December 5 – Structure Fire, West Greene Rd.**



**December 16 – Wildland Fire Assist Dept. 24, Wintergreen Gorge**



**December 19 – MVA Assist Dept. 17, Wattsburg Rd & Phillippsville Rd.**

